



**Covert Road, Northchurch, HP4 3RS**  
**Asking price £575,000**

**Sears & Co**  
estate & letting agents

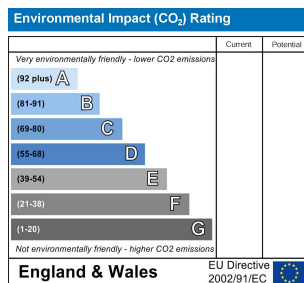
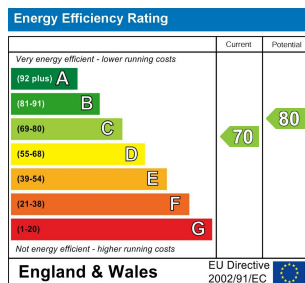


**\*\* NO UPPER SALES CHAIN \*\***

A well presented two bedroom semi detached bungalow, situated in this rarely available position position on Covert Road, Northchurch, HP4, with accommodation spanning in excess of 1000 sqft.

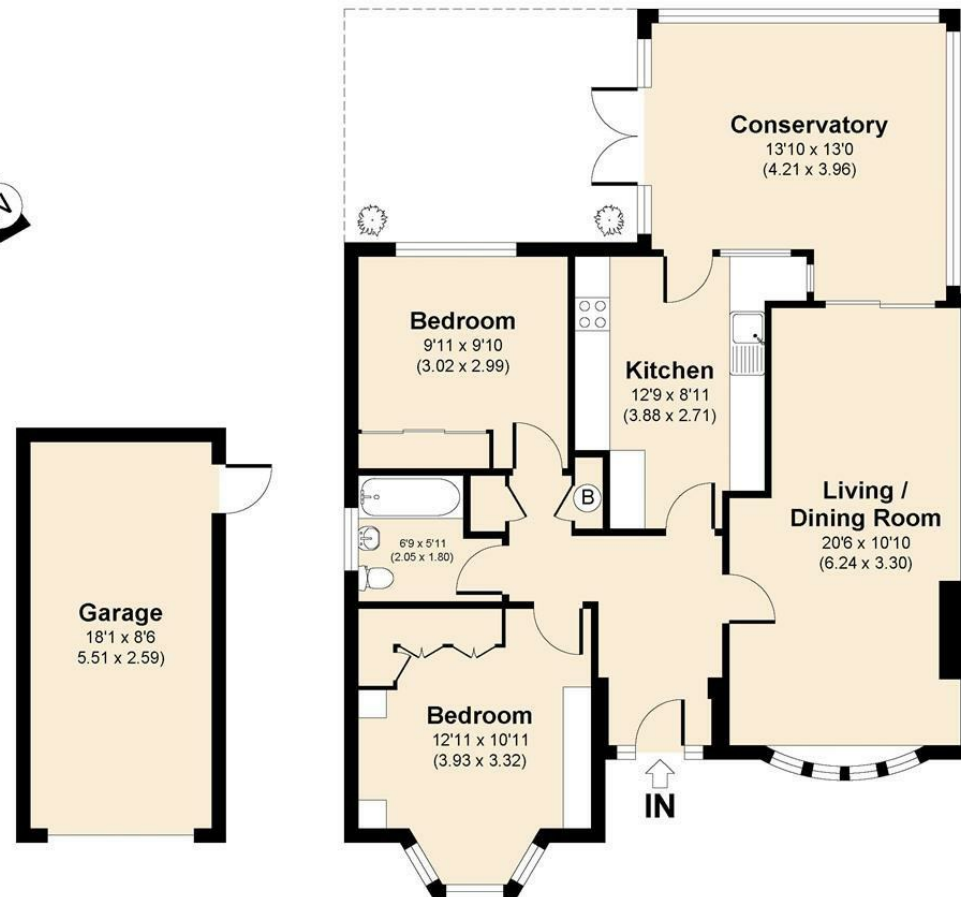
The layout comprises an entrance hallway, well appointed 20ft living/dining room, refitted kitchen, conservatory, two double bedrooms and a family bathroom with a three piece white suite.

Externally the property further boasts driveway parking, a detached garage and a well presented private rear garden. Council tax band D. Contact sole appointed selling agents Sears & Co to arrange a viewing.



**Sears & Co**

[www.searsandco.co.uk](http://www.searsandco.co.uk) call: 01442 254 100



## Ground Floor

### Covert Road, HP4

APPROX. GROSS INTERNAL FLOOR AREA 1006.64 SQ FT / 93.52 SQ M. INC. GARAGE

SEARS&CO: THIS IMAGE IS ILLUSTRATIVE ONLY - NOT TO SCALE: COPYRIGHT: THE IMAGE TAILOR LTD. 2025.

The Agent has not tested any apparatus, equipment, fixtures and fittings or services and so cannot verify that they are in working order or fit for the purpose. A Buyer is advised to obtain verification from their Solicitor or Surveyor. References to the Tenure of a Property are based on information supplied by the Seller. The Agent has not had sight of the title documents. A Buyer is advised to obtain verification from their Solicitor. Items shown in photographs are NOT included unless specifically mentioned within the sales particulars. They may however be available by separate negotiation. Buyers must check the availability of any property and make an appointment to view before embarking on any journey to see a property. All floorplans and photographs contained in this brochure and for illustrative purposes only measurements cannot be guaranteed and should not be relied upon. Photographs may have had blue sky added and/or brightened. For further information see the Property Misdescriptions Act.

[www.searsandco.co.uk](http://www.searsandco.co.uk)

# Sears & Co

Hemel Hempstead Office: 67 High Street, Old Town, Hemel Hempstead, Hertfordshire, HP1 3AF  
call: 01442 254 100



